



Create the Process Then Trust the Process!

by

Timothy Johnson – Erie 1 BOCES



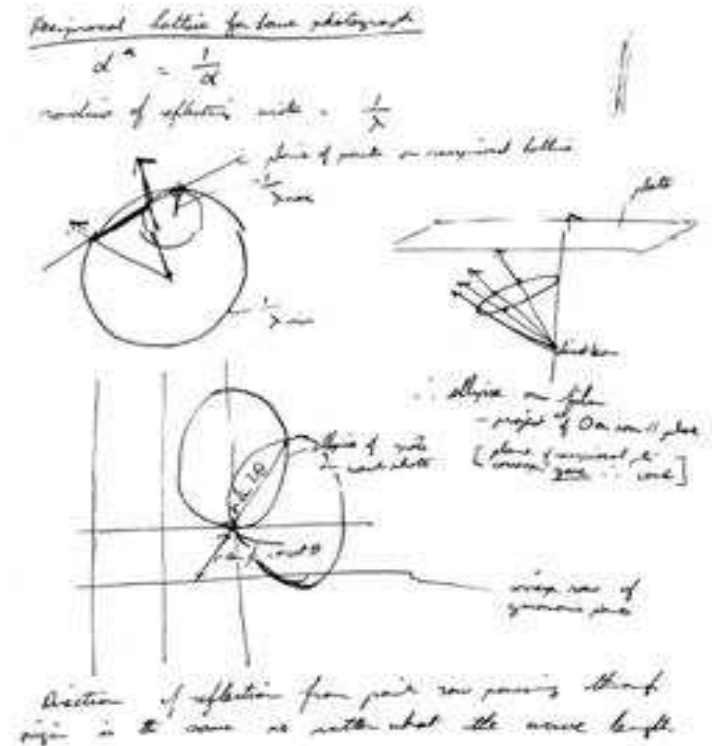
Two years ago I presented a session called the Vince Lombardi Data Session. This year the session will focus on a new football coach. Sean McDermott of the Buffalo Bills is the new Vince Lombardi. He talks about “trusting the process”. Before you can do that, you have to create the process your district needs to follow to make sure that your data can be verified and certified. Let’s see how to do that.

Step #1 - Create a Process (Model)

- To achieve the best data driven outcomes, the educators in a district need to know how their data system works. To accomplish this educators need to know their software systems and how they interact with each other. They also need to know who does what.
- Invite as many data stakeholders to participate in a data team meeting. Even if you can't get everyone in the same meeting the process is still valuable to go through with smaller groups individually or to do it in a virtual format.
- At this meeting develop a district data system model by having the district personnel create it.

Criteria For Modeling :

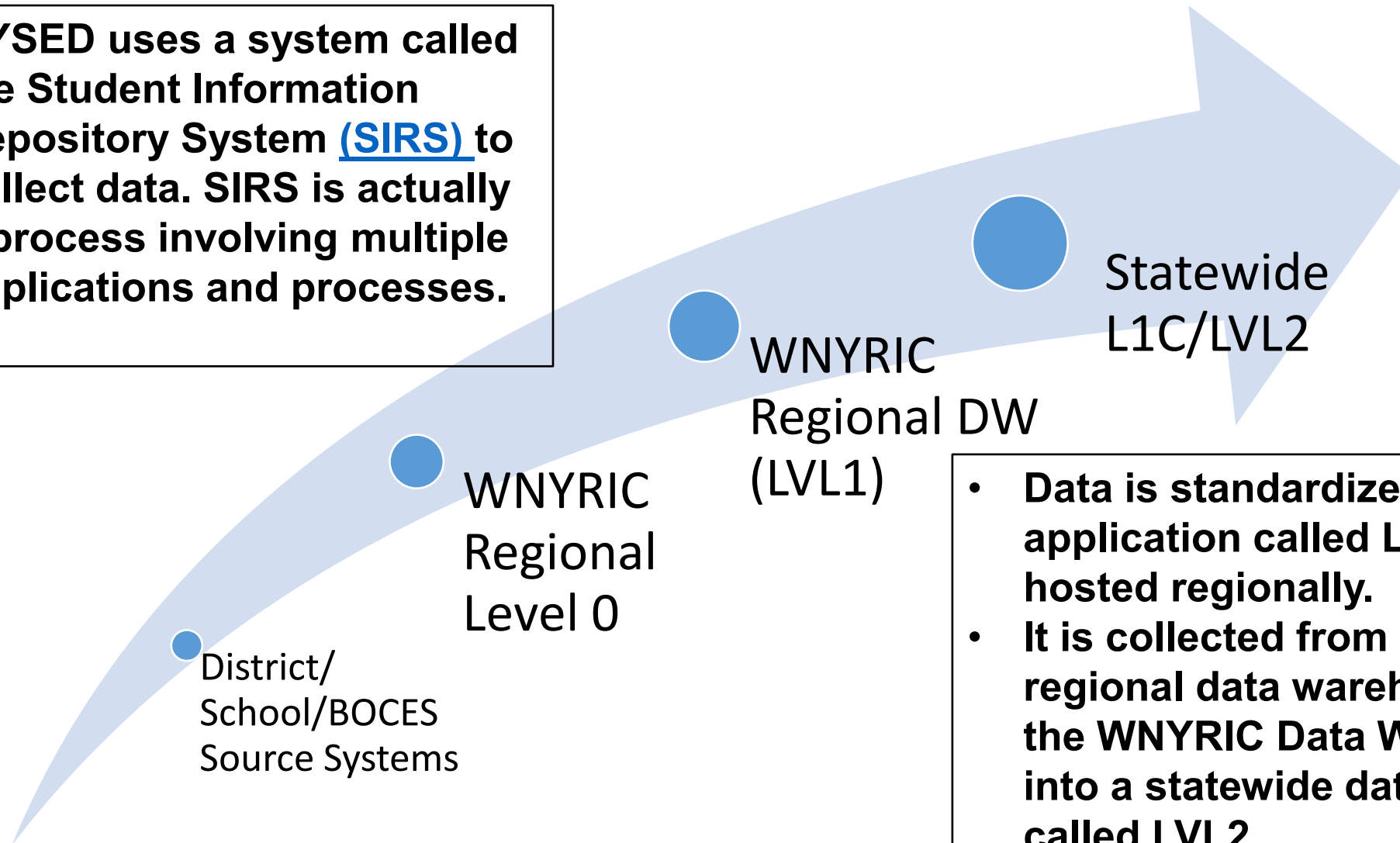
1. Modeling completed in a social setting
2. Inclusive of editing/revision
3. Shows a process/uses labels
4. Grounded in scientific fact



Here are some regional models.

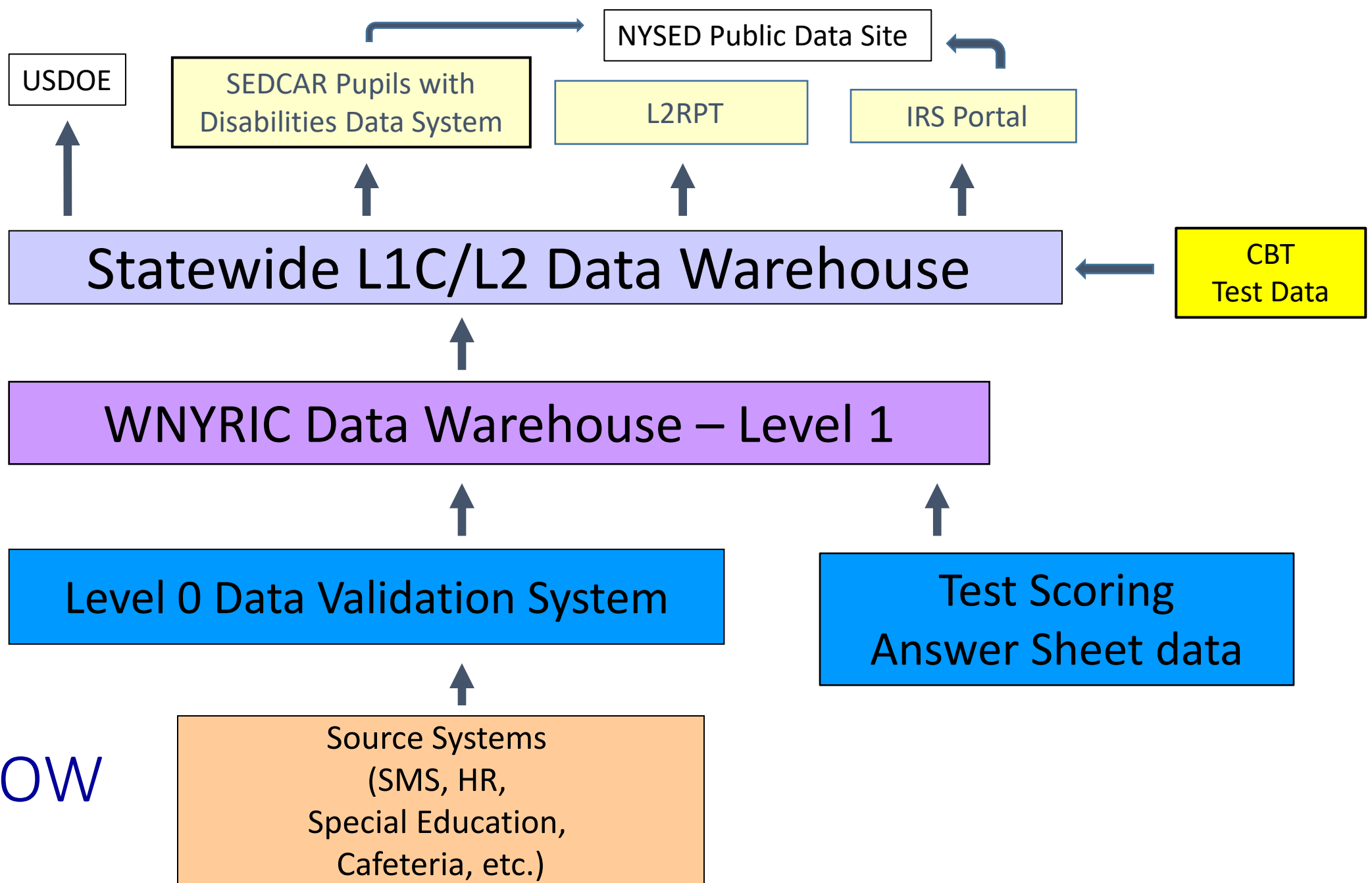
How does the data get to NYSED?

NYSED uses a system called the Student Information Repository System ([SIRS](#)) to collect data. SIRS is actually a process involving multiple applications and processes.



- **Data is standardized via an application called Level 0 hosted regionally.**
- **It is collected from Level 0 via regional data warehouses like the WNYRIC Data Warehouse into a statewide data warehouse called LVL2.**

DATA FLOW



What is your district's Data system?

- Using the Word document provided create an initial model of how the data system in your district works. Start by creating models that each data person creates. If something is missing create new boxes to connect.
 - Encourage data folks to put down what they know
 - Draw how it works
 - Use labels
 - Be as detailed as possible

Facilitate the sharing of these individual models

- Starting with a volunteer, have each data team member share their individual models - let them all share w/o interruption
- After everyone has shared their model allow for Q & A
- Revise your model based on inaccuracies that your colleagues have exposed in your model
- Be as accurate as possible

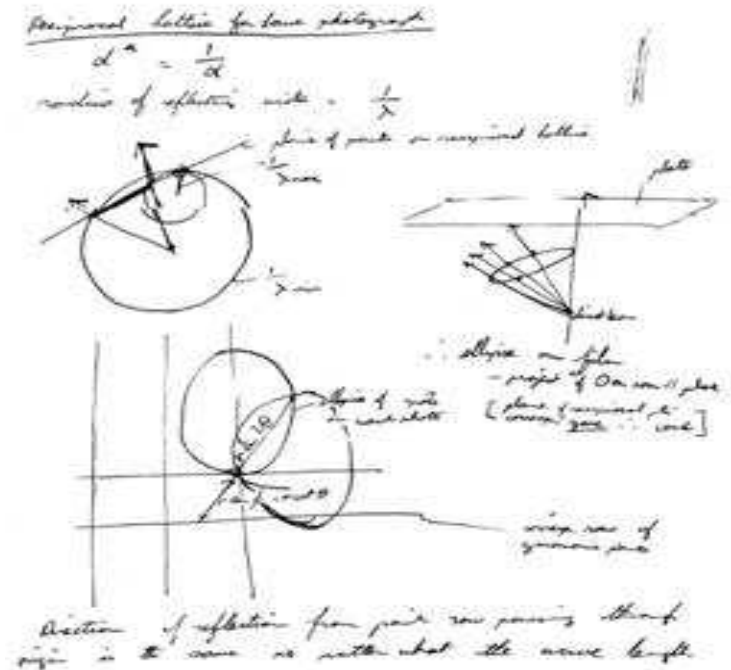
Step #2 - Draw a collaborative Model

- As the facilitator, have the group now create a district data model
- Again, make sure they use the modeling protocol
- Once the model is produced, revisit the NYSSLS criteria for modelling to make sure it was followed

Does our model meet the criteria?

Criteria For Modeling :

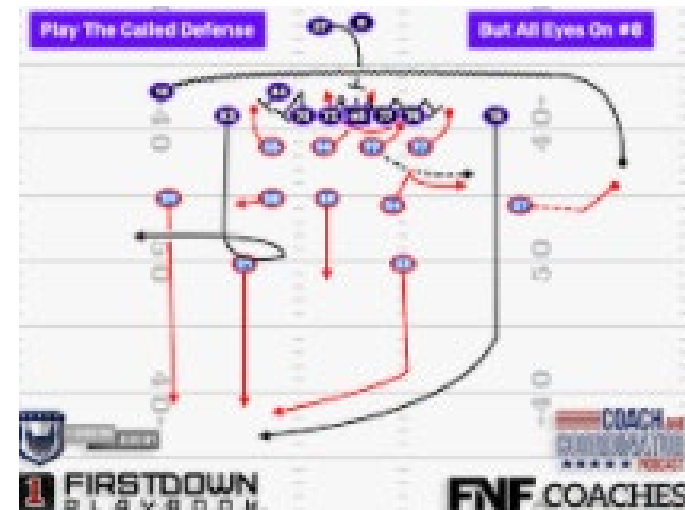
1. Modeling completed in a social setting
2. Inclusive of editing/revision
3. Shows a process/uses labels
4. Grounded in scientific fact



Step #3 – Test the Model

– What if?

- Have a discussion using the collaborative model to see if any revisions are needed
- If there are any flaws in the system, then the model needs to be revised
- Bring up scenarios to make sure the model is valid



Step #4 - Explore data in the system

- Allow the team members to ask questions
- Show them where the data resides
- Begin with the big picture, then drill down into the specifics
- Go into Level 2 and show data submitted
- Eventually go to Level 1
- Then to Level 0
- Source systems
- As you go backwards, ask questions and revise the model
- The model changes as new pieces are introduced

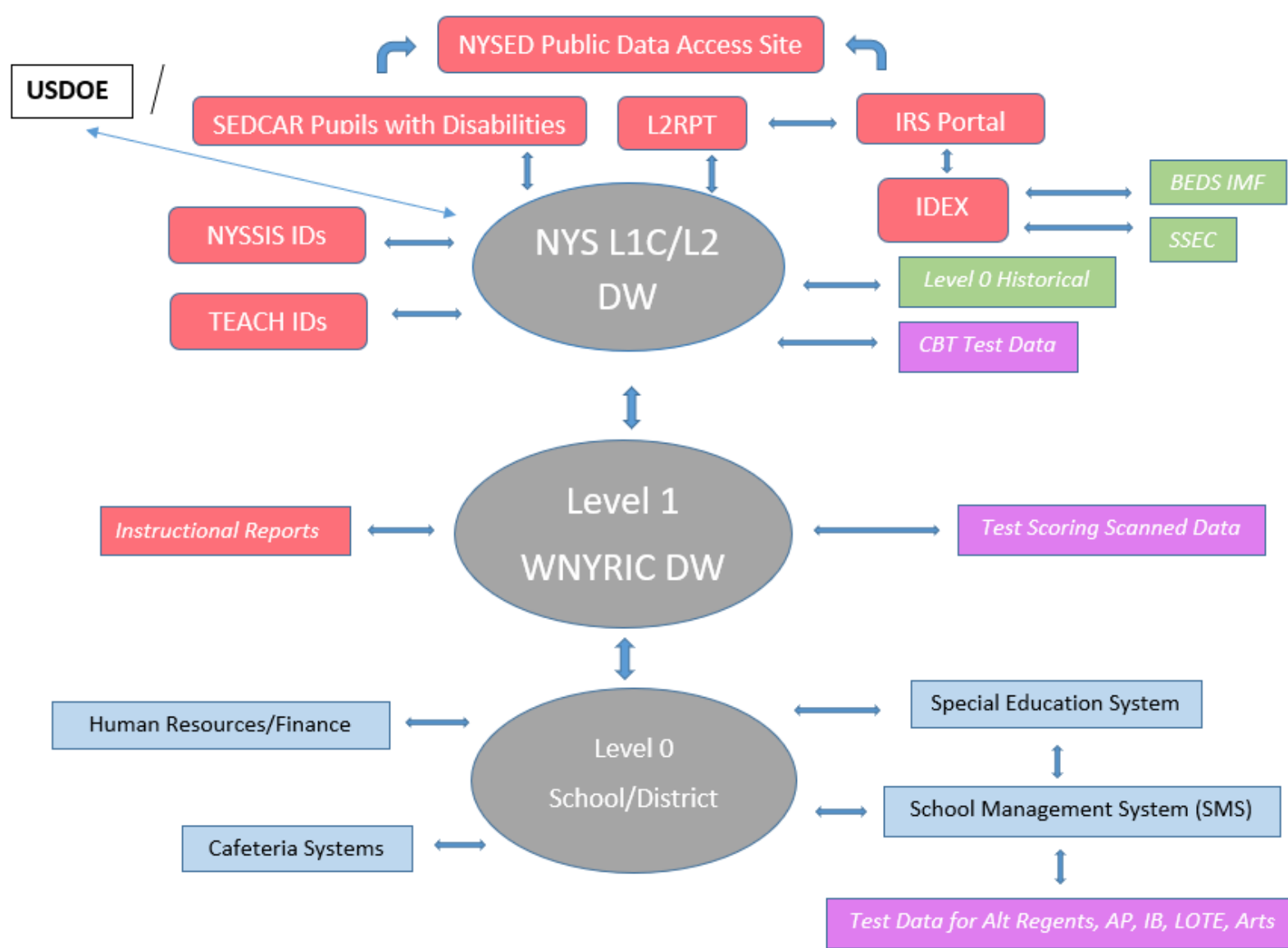
Be ready to go where the discussion goes

- Level 1 & 2 - <https://dwdataview.wnyric.org/>
- Application Business Portal - <https://portal.nysed.gov/abp>
- School Report Card Site - <https://data.nysed.gov/>
- Level 0
- Student Management System - eSchool, PowerSchool, Infinite Campus, School Tool
- Special Ed System - IEP Direct or ClearTrack
- HR system – nVision, Wincap
- Food Service – WebSMARTT, Mosaic, Nutrikids

Once a model is agreed on make sure everyone has access or a copy of it.

Then Stick to it!

Let's see an initial example



Snowytown CSD Data Chart





Contact

Timothy Johnson
Senior Coordinator
Data Analysis & Support
Technology Services

Erie 1 BOCES/WNYRIC
355 Harlem Rd.
West Seneca, NY 14224-1892
tjohnson@e1b.org

Office (716) 821-7227

