

2020-21  
REPORTING UPDATES:  
IMPACTS DUE TO COVID-19

Reopening through Reporting

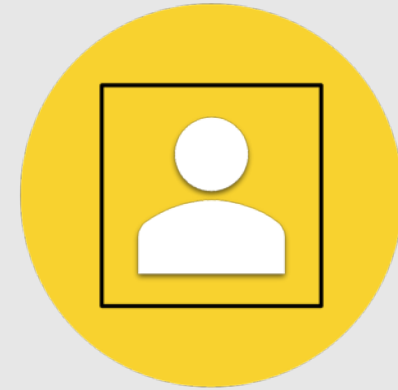
# 2020-21 Updates



DATA COLLECTIONS AND  
REPORTING.



COVID CONSIDERATIONS WITH  
STATE REPORTING  
REQUIREMENTS



NEW DDC  
RECOMMENDATIONS

# IRS Data Collections and Reporting 2020-21

## Data Collections

- Basic Educational Data System ([BEDS](#)) Institutional Master File (IMF). [bedsvadirsupport.nysed.gov](https://bedsvadirsupport.nysed.gov) via Data Support
- Special Education Data Collection, Analysis & Reporting ([SEDCAR](#)) PD Data System. [PD System Support](#) via Data Support.
- School Safety and Educational Climate ([SSEC](#)).
- Student Information and Repository System ([SIRS](#))

## Data Reporting

- 2020-21 SIRS [Timeline](#)
- 2020-21 SIRS [Manual](#) Guidance
- Public Data [Site](#), 2019-20SY reporting
  - Not Reporting: 3-8 ELA Assessment Data or 3-8 Math Assessment Data
  - No Changes: Enrollment, ELL Data, HS Grad Rate, HS Pathways, AP & IB, Student and Educator Report, Fiscal Transparency
  - Modified: School Report Card and Special Education Data
- School Safety and the Educational Climate ([SSEC](#))

# 2019-20 School Report Card

+ What data would you like to see?

## 2020-21 ACCOUNTABILITY STATUS BASED ON 2018-19 DATA

Per the U.S. Department of Education-approved waiver, districts and schools, including subgroups, will maintain in the 2020-21 school year the same accountability status assigned for the 2019-20 school year with no progress determinations. For more information, please see the memorandum from the Office of Accountability entitled, "2019-20 Accountability Implications to Address the COVID-19 Crisis."

---

District: GOOD STANDING, TARGET DISTRICT, GOOD STANDING: POTENTIAL TARGET DISTRICT, GOOD STANDING: POTENTIAL CSI

School: GOOD STANDING, TARGETED SUPPORT AND IMPROVEMENT, COMPREHENSIVE SUPPORT AND IMPROVEMENT, CLOSING SCHOOL

SECTION 1003 SCHOOL IMPROVEMENT FUNDS (2019-20)

# 2020 Staff Assignment in SIRS

*Student Information Repository System Manual Version 16.0*

## **Chapter 3: Staff Reporting Rules**

Data on teachers and principals of public schools and BOCES and teachers and leaders of charter schools, including all courses taught by teachers and the students enrolled in these courses, must be reported in the SIRS.

These data are required by state and federal laws and regulations for numerous purposes, including teacher/leader evaluation requirements outlined in Education Law §3012-d; Annual Professional Performance Review (APPR) (<https://www.engageny.org/tle-library>); Teacher-Leader Effectiveness (TLE); and PMF (Personnel Master File), which includes files submitted to the U.S. Department of Education concerning course and student counts and teacher certification data. Many of these data sets are also required to be made publicly available and will be displayed in the NYS School Report Cards. Other information is necessary to support the policy development and reform agenda of the Board of Regents.

### **Reporting Requirements**

All public school districts, BOCES, and charter schools are required to submit school year data using the templates below.

Student Management System and Human Resource Management System vendors

APPR

CRDC

NYS Testing

Accountability

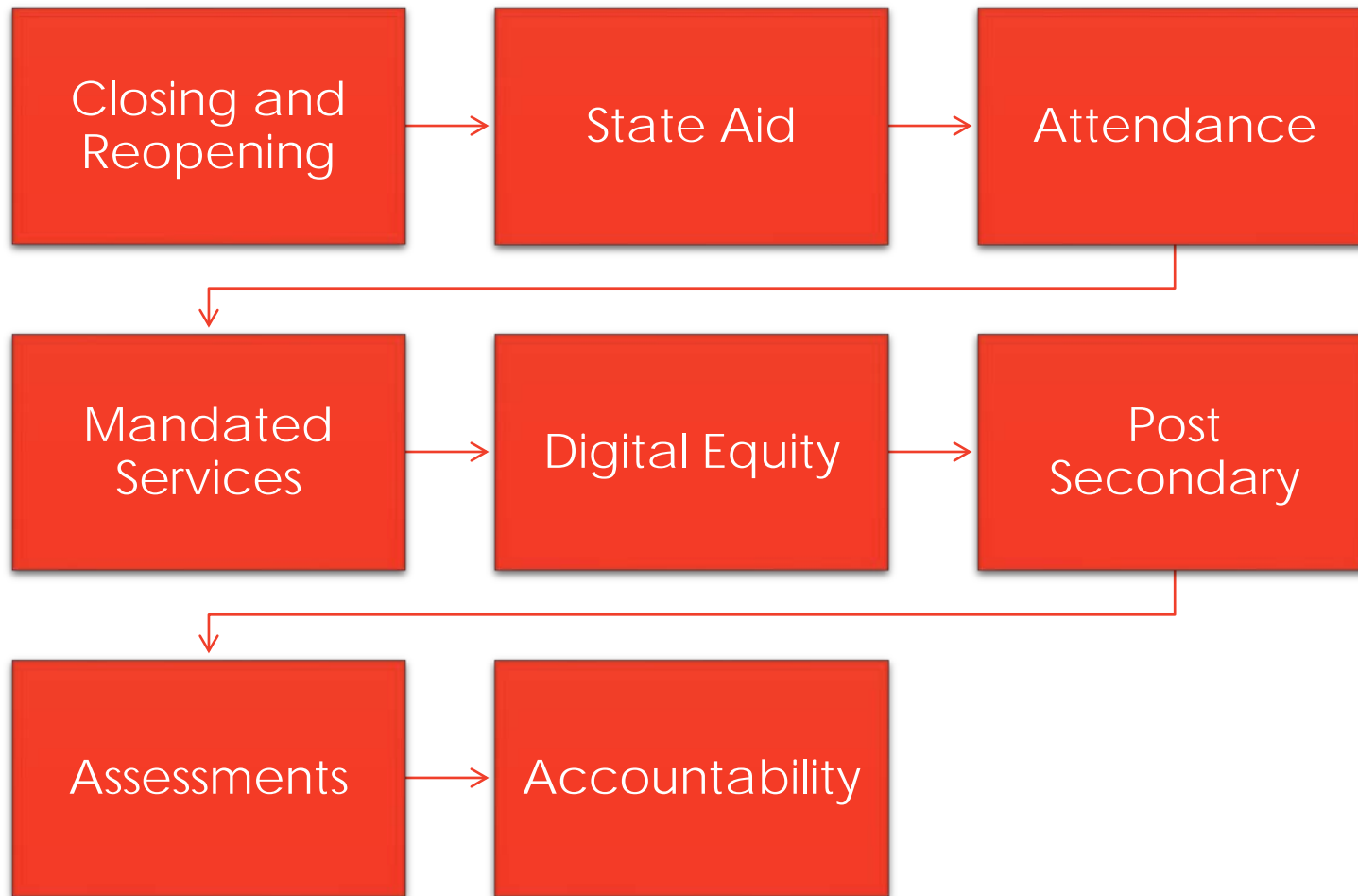
To be  
or  
not to be...

That

IS

the

question!



C19  
Considerations  
for the future

# New District Data Coordinators (DCC)



Assemble and Lead

- Management information systems
- Knowledge of NYSED requirements
- Data analysis experience



Ensure data integrity & accuracy

- Configurations and staff responsibilities
- Align data with codes
- Consistency across departments and functions



Systems alignment

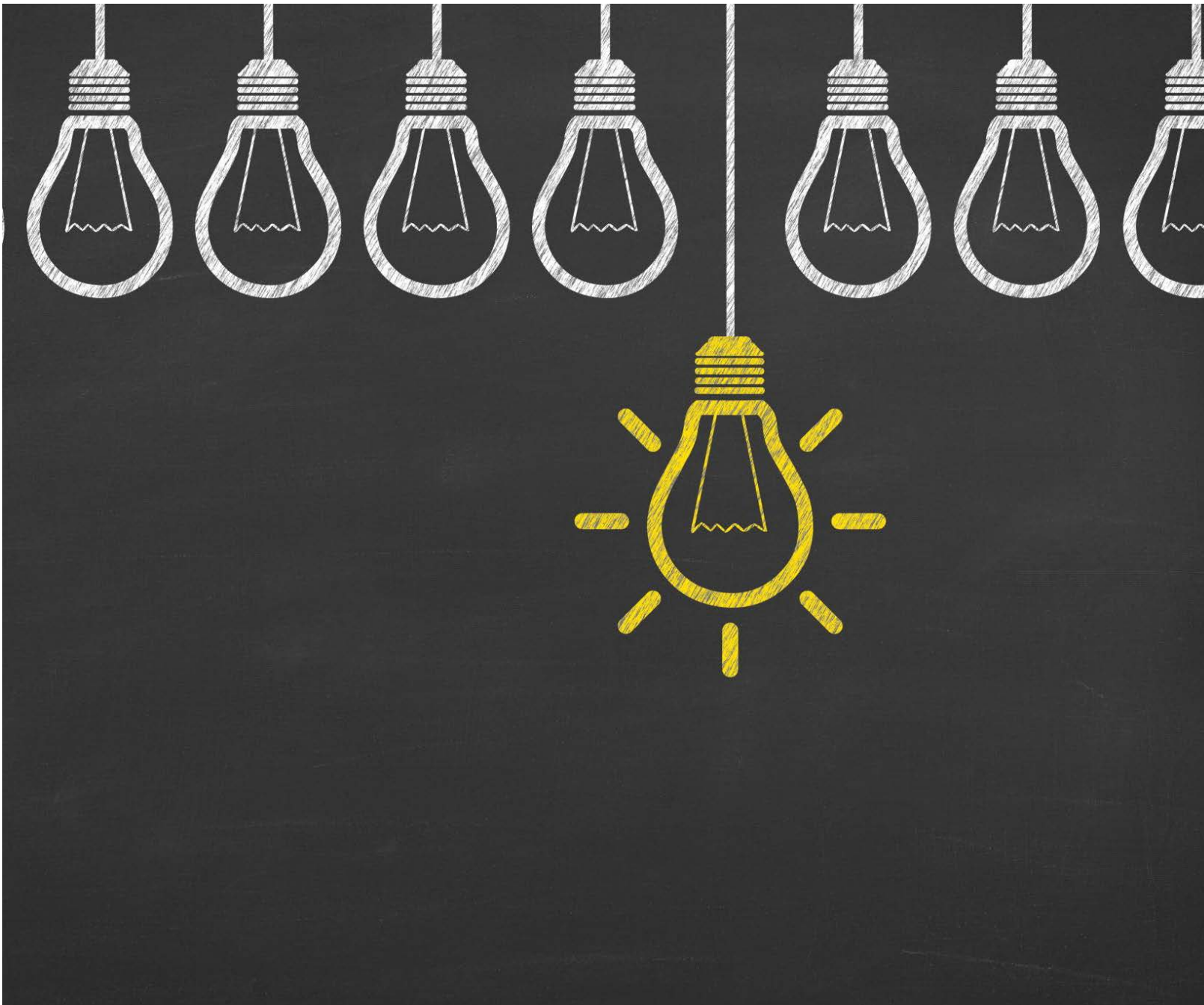
- Flexibility modifying fields or screens
- Update/change validation



Communication & Data Governance

- Verification protocols
- Internal meetings
- Deadlines
- Status reports
- Vendors
- Compliance
- Liaison
- Certifications
- initiatives
- DDC meetings





# Thank You

Rose LeRoy

Director of Educational  
Data and Research

New York State Education  
Department

(518) 474-7965

[Data Support](#)

[Rose.LeRoy@NYSED.GOV](mailto:Rose.LeRoy@NYSED.GOV)